

Coordinates Export Filter (Module EXPORT)

General

This filter is a sample filter that was designed to help developers of filters for TommySoftware® CAD/DRAW 4. It serves, however, a purpose.

Lists of coordinates, based on objects selected in the drawing (e.g. markings) can be exported. This is especially useful for exporting coordinates that have been evaluated by construction.

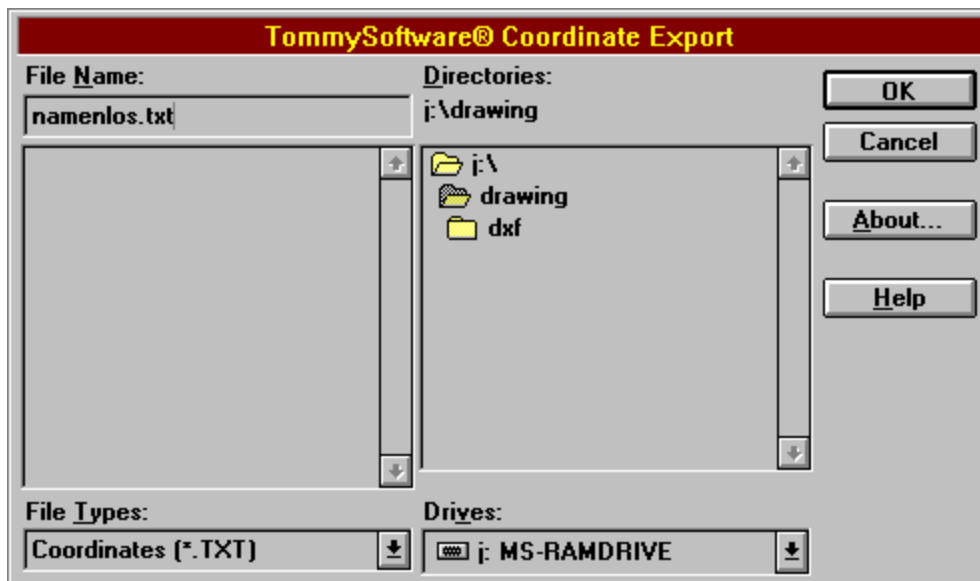
The filter works with a simple format that uses basic elements of TVG 4.0. One line for each coordinate pair, beginning with a comma, followed by the two coordinates separated by another comma, terminated by a semicolon, e.g. `,10.0,20.0;`. The sequence of coordinates is ended by a line containing `999;`. A valid file would be:

```
,10.0,20.0;  
,20.0,20.0;  
,20.0,10.0;  
,10.0,10.0;  
999;
```

Note: This filter uses the simplest exporting method available. As a result, all objects will be resolved into polylines before export! If you want to export only specific coordinates, you should set markings on them and select only markings for export.

File Selection

How can I access information on this dialog?



TOMMYSOFTWARE®

North America, Inc.
648 Ashbury Street

Germany
Selchower Straße 32

San Francisco, CA 94117
U. S. A.

Phone 1-800-275-9406
Phone (415) 522 0612
Fax (415) 522 0287

CompuServe GO TOSOENG

D-12049 Berlin
Germany

Phone +49 30 621 5931
Fax +49 30 621 4064

CompuServe GO TOSOGER

Internet

sales@tommysoftware.com (Sales)
support@tommysoftware.com (Technical Support)
<http://www.tommysoftware.com> (World Wide Web)

Clicking on this button will close the dialog accepting all changes. Any changes or operations specified will be carried out.

Clicking on this button will close the dialog, without accepting any changes. Any following operation will not be carried out.

This text shows the path of the directory whose contents are shown in the file list. This path is always shown in front of the file name in the "Name" field.

The name of the file to be used is entered in this field. If there is a file in the list whose name begins with the character entered, this file is put at the top of the list.

The extension for the files to be displayed can be selected from this list. There are usually only two or three file extensions available. If a standard ending (TXT) is chosen, it is forced. This means that the chosen ending is applied to all files.

For example, if a drawing file called `MYFILE` is entered, the extension TXT will be used, the resulting file will be called MYFILE.TXT.

All the files in the current directory with the specified extension are shown in this list. Clicking once on a filename puts that name in the "Name" field, where it can be changed. Double-clicking on a file name selects that file and closes the dialog as if the "OK" button had been clicked on

All the sub-directories in the current directory are shown in this list. Double-clicking on a directory name will open or close that directory.

All available disk drives are shown in this list. Selecting a disk drive name makes that drive the active drive, and the path shows current root directory of that drive.

Clicking on this button displays brief information about this filter.

Clicking on this button display the help text for this dialog window.

Clicking on this button accepts the current file name. If a standard ending has been chosen from the list of extensions (TXT) this is forced. This means that the file will use the selected extension, whichever extension is entered.

The program checks whether the file already exists. If the file to be loaded does not exist, then an error message appears and the dialog remains open. If a file with the same name as the one to be saved already exists, a message appears and you can choose whether or not to overwrite the existing file.

Clicking on this button will close the dialog, without loading or saving a file.

